

PRODUCT SPECIFICATION SHEET

Roll container **type FP 682 1500 F**
682x815x1690 mm, 2-sided / 3-sided / 4-sided

Technical data sheet:

base: made of high-density polyethylene HDPE (fully recyclable), reinforced with 2 steel flat bars 12x3 mm

castor set: rim and tread made of polypropylene PP, 2 fixed and 2 swivel castors roller bearings, wheel diameter - 108 mm

		length	width	height
2-sided variant:	external dimensions:	682 mm	815 mm	1690 mm
	internal dimensions:	620 mm	815 mm	1440 mm

		length	width	height
3-sided variant:	external dimensions:	682 mm	815 mm	1690 mm
	internal dimensions:	620 mm	770 mm	1495 mm

		length	width	height
4-sided variant:	external dimensions:	682 mm	835 mm	1690 mm
	internal dimensions:	620 mm	735 mm	1495 mm

load capacity: up to 500 kg

walls: side panels' main frame made of round steel tube, diameter 22 mm, infilled with round steel tubes, diameter 19 mm

surface finish: zinc hot dip galvanised

temperature resistance: -20°C to +60°C

Product description:

Our roll container type FP 682 1500 F consists of a base plate fitted with 2 fixed castors and 2 swivel castors. The base is made of recyclable HDPE plastic, additionally reinforced on the underside with two steel flat bars. The castors are made entirely of polypropylene and have a diameter of 108 mm, mounted on roller bearings. Thanks to this design, the transport of goods is easy, as it ensures smooth movement on smooth floors. The container is dedicated to, among other things, the laundry industry. The castors can withstand temperatures from -20°C to +60°C. All steel parts of the container are zinc hot dip galvanised. Other base colours (RAL) available on request. Large selection of additional accessories (shelves, transport handles, covers, load securing straps, etc.).



4-sided variant
with a foldable front wall



3-sided variant



2-sided variant

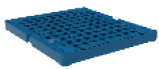


side wall layout

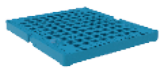


zinc hot dip galvanised

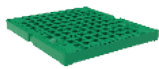
wide selection of colors (RAL palette) to be chosen from



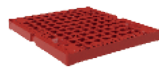
5010
niebieski Chagall



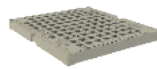
5012
niebieski lekki



6024
„traffic green”



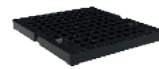
3000
czerwony ognisty



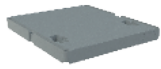
7032
szary beżowy



9005
czarny głęboki



9005+R
czarny głęboki



7046
szary ciemniejszy



wide selection of castor sets



wide selection of straps



handles can be installed

