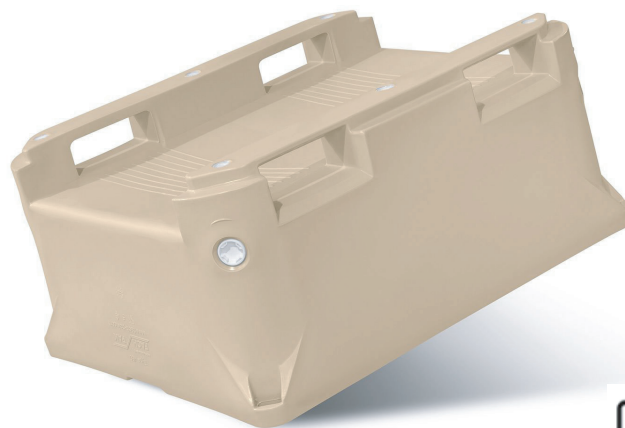


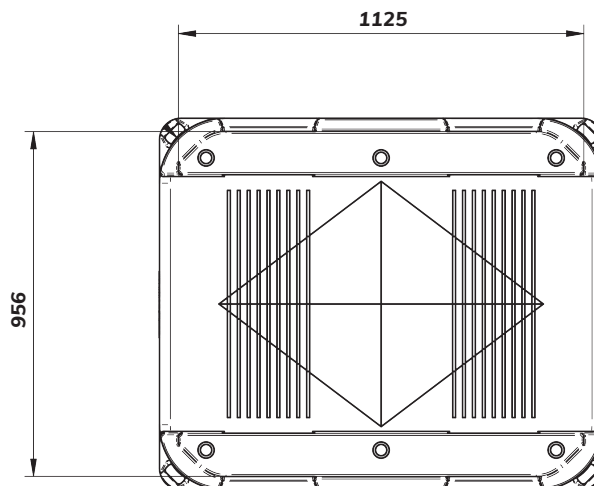
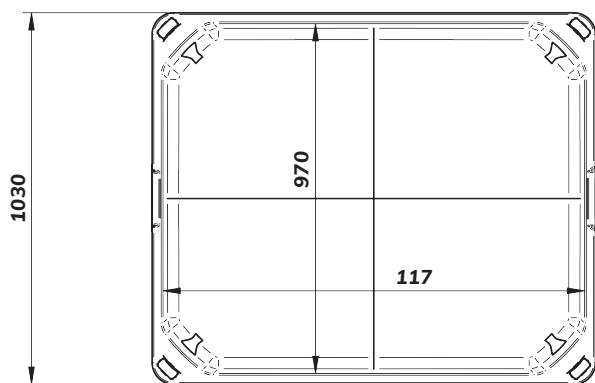
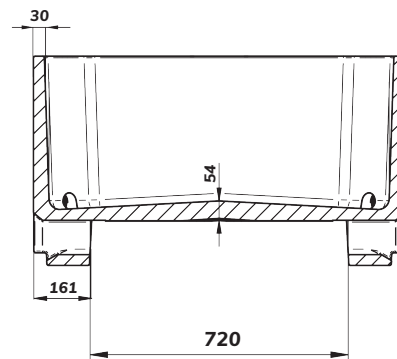
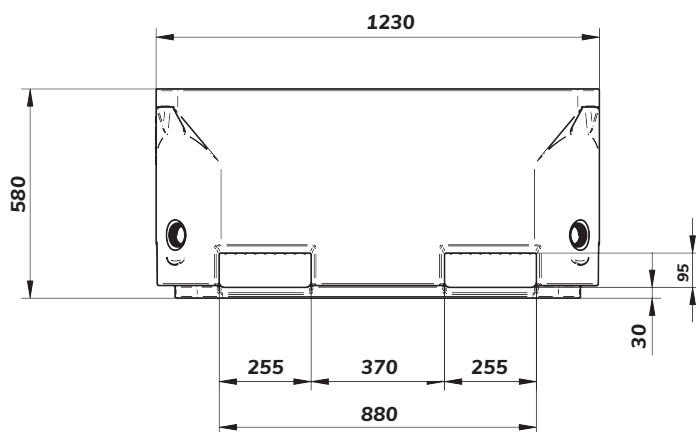
TYPE 460 PUR



PRODUCT SPECIFICATION

PRODUCT ID FP-460-1 PUR
MATERIAL virgin PE-1A
INSULATION polyurethane foam (PUR)

| DIMENSIONS | Exterior | Interior maximum | Interior minimum |
|------------|----------|------------------|------------------|
| LENGTH | 1230 mm | 1170 mm | 1141 mm |
| WIDTH | 1030 mm | 970 mm | 946 mm |
| HEIGHT | 580 mm | 410 mm | 400 mm |



values in mm



| | |
|----------------|-----------------------------------|
| CAPACITY | 445 L |
| WALL THICKNESS | 30 mm |
| WEIGHT | 42 kg |
| DRAIN HOLES | 0 - 1 - 2 - 3 - 4 / 2" BCS 56 x 4 |
| STACKABLE WITH | type 460 / 650 / 660 |

DEDICATED LID (additional equipment)

top



bottom



variant no. 1

bottom



variant no. 2

CHARACTERISTIC

- smooth, solid and hygienic walls and bottom
- 2 runners
- up to 4 drainage holes with stoppers
- gravity floor and drips for easier drainage
- suitable for contact with perishable products
- strong and robust corners allowing safe operating with crane's lifting hooks
- stackable with or without lid
- rounded design for easy washing and cleaning
- pallet truck access from all 4 sides
- available in beige and blue colour, other colours upon request
- long lasting UV-protection

IMPORTANT

- dimensional tolerance $\pm 3\%$, any changes and errors reserved.
- all technical data provided are guide values - they may vary because of specific applications and conditions, the information provided are based on the current knowledge and experience.
- the user is obliged to carry out its own tests and inspections before regular usage of the product.