

PRODUCT SPECIFICATION



PRODUCT ID

FP-FBG 1210K

VERSION

closed, with 3 runners

CAPACITY

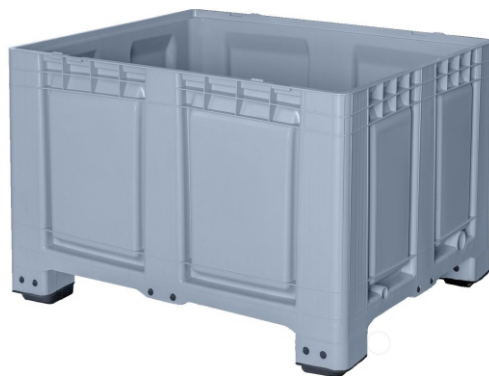
680 L / 179.63 gal

WEIGHT

46 kgs / 101,41 lb.

DIMENSIONS

	Outside	Inside
LENGTH	47,24 in	44,09 in
WIDTH	39,37 in	36,22 in
HEIGHT	31,10 in	24,80 in



PRODUCT ID

FP-FBG 1210

VERSION

closed, with 4 feet

CAPACITY

680 L / 179.63 gal

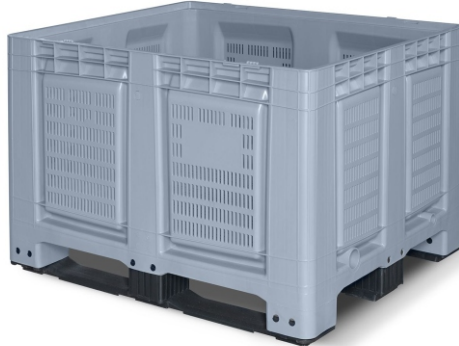
WEIGHT

42 kgs / 92,59 lb.

DIMENSIONS

	Outside	Inside
LENGTH	47,24 in	44,09 in
WIDTH	39,37 in	36,22 in
HEIGHT	31,10 in	24,80 in

PRODUCT SPECIFICATION



PRODUCT ID

FP-FBO 1210K

VERSION

perforated, with 3 runners

CAPACITY

680 L / 179.63 gal

WEIGHT

42 kgs / 92,59 lb.

DIMENSIONS

	Outside	Inside
LENGTH	47,24 in	44,09 in
WIDTH	39,37 in	36,22 in
HEIGHT	31,10 in	24,80 in



PRODUCT ID

FP-FBO 1210

VERSION

perforated, with 4 feet

CAPACITY

680 L / 179.63 gal

WEIGHT

41 kgs / 90,39 lb.

DIMENSIONS

	Outside	Inside
LENGTH	47,24 in	44,09 in
WIDTH	39,37 in	36,22 in
HEIGHT	31,10 in	24,80 in