

## PRODUCT SPECIFICATION SHEET

### Roll container **type** **FP 1650 FV**

724x815x1830 mm, 2-sided / 3-sided / 4-sided

front wall available in 3 variants: full / foldable / with 2 openable door halves

#### Technical data sheet:

**base:** made of high-density polyethylene HDPE (fully recyclable), reinforced with 2 steel flat bars 12x3 mm.

**castor set:** rim and tread made of polypropylene PP, 2 fixed and 2 swivel castors  
roller bearings, wheel diameter - 108 mm

		length	width	height
2-sided variant:	external dimensions:	724 mm	815 mm	1830 mm
	internal dimensions:	660 mm	815 mm	1640 mm
		length	width	height
3-sided variant:	external dimensions:	724 mm	815 mm	1830 mm
	internal dimensions:	660 mm	775 mm	1640 mm
		length	width	height
4-sided variant:	external dimensions:	724 mm	815 mm	1830 mm
	internal dimensions:	660 mm	750 mm	1640 mm

load capacity:	up tp 500 kg
walls:	side panels made of round steel tube, diameter 22 mm, infilled with 12x3 mm flat steel bars, integrated clips. front wall available in 3 variants - full, foldable or with 2 openable door halves
surface finish:	zinc electro-plated Cr3 (blue)
temperature resistance:	-20°C to +60°C

#### Product specification:

Our roll container type FP 1650 FV consists of a base plate fitted with 2 fixed castors and 2 swivel castors. The base is made of recyclable HDPE plastic, additionally reinforced on the underside with two steel flat bars.

The wheels are made entirely of polypropylene and have a diameter of 108 mm, mounted on roller bearings. This design makes transporting goods easy, as it ensures smooth rolling on smooth floors. Furthermore, the wheels can withstand temperatures from -20°C to +60°C.

All metal parts of the container are zinc electro-plated Cr3 (blue)

Up to 3 shelves can be installed.

Quick disassembly of walls when required.

Base plates can be made of plastic, metal or wood.

Front wall available in 3 variants - full, foldable or with 2 openable door halves

Other base colours (RAL) available on request.

Large selection of accessories (shelves, transport handles, covers, load securing straps, etc.).



4-sided version with foldable front wall



4-sided version, full front wall, wooden base



4-sided variant, front wall with 2 openable door halves with "hygienic" base



side walls easy to assemble / disassemble

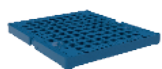


zinc electro-plated Cr3 (blue)

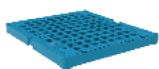


shelves can be installed

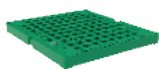
## wide selection of colors (RAL palette) to be chosen from



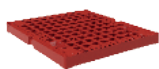
5010  
niebieski Chagall



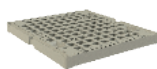
5012  
niebieski lekki



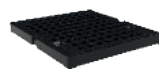
6024  
„traffic green“



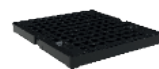
3000  
czerwony ognisty



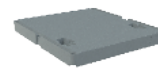
7032  
szary beżowy



9005  
czarny głęboki



9005+R  
czarny głęboki



7046  
szary ciemniejszy



wide selection of castor sets



wide selection of straps



handles can be installed