

## PRODUCT SPECIFICATION SHEET

### Roll container **type FP 682 1650**

682x815x1830 mm, 2-sided / 3-sided

#### Technical data sheet:

base:	made of high-density polyethylene HDPE (fully recyclable), reinforced with 2 steel flat bars 12x3 mm.			
castor set:	rim and tread made of polypropylene PP, 2 fixed and 2 swivel castors (self-adjusting), roller bearings, wheel diameter - 108 mm			
2-sided variant:		length	width	height
	external dimensions:	682 mm	815 mm	1830 mm
	internal dimensions:	620 mm	815 mm	1640 mm
3-sided variant:		length	width	height
	external dimensions:	682 mm	835 mm	1830 mm
	internal dimensions:	620 mm	815 mm	1640 mm
load capacity:	up tp 500 kg			
walls:	side panels made of round steel tube, diameter 22 mm, infilled with 12x3 mm flat steel bars.  <b>3-sided construction</b> - the rear wall is fixed to the outside, so that the interior offers full space for EURO size containers (up to 600x800 mm).			
surface finish:	zinc electro-plated Cr3 (blue)			
temperature resistance:	-20°C to +60°C			

#### Product description:

Our roll container type FP 682 1650 consists of a base plate fitted with 2 fixed castors and 2 swivel castors. The base is made of recyclable HDPE plastic, additionally reinforced on the underside with two steel flat bars.

The wheels are made entirely of polypropylene and have a diameter of 108 mm, mounted on roller bearings. This design makes transporting goods easy, as it ensures smooth rolling on smooth floors. Furthermore, the castors can withstand temperatures from -20°C to +60°C.

All metal parts of the container are zinc electro-plated Cr3 (blue)

Up to 5 shelves can be installed.

Quick disassembly of the walls when required.

Other base colours (RAL) available on request.

Large selection of additional accessories (shelves, transport handles, covers, load securing straps, etc.).

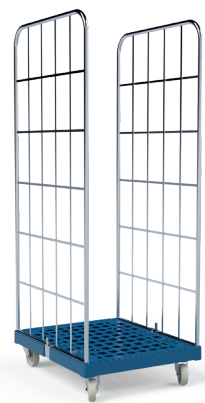
IDEAL FOR  
EURO-STANDARD BOXES



3-sided variant with an additional shelf



3-sided variant



2-sided variant



side walls easy to  
assemble / disassemble

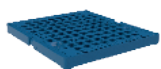


zinc electro-plated Cr3 (blue)

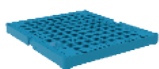


shelves can be installed

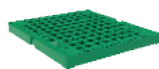
## wide selection of colors (RAL palette) to be chosen from



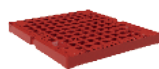
5010  
niebieski Chagall



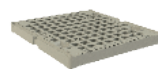
5012  
niebieski lekki



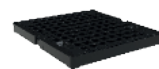
6024  
„traffic green”



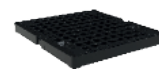
3000  
czerwony ognisty



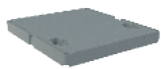
7032  
szary beżowy



9005  
czarny głęboki



9005+R  
czarny głęboki



7046  
szary ciemniejszy



wide selection of castor sets



wide selection of straps



handles can be installed

