

PRODUCT SPECIFICATION SHEET

Roll container **type FP 682 1350**

682x815x1585 mm, 2-sided

Technical data sheet:

base:	made of high-density polyethylene HDPE (fully recyclable), reinforced with 2 steel flat bars 12x3 mm			
castor set:	rim made of polyamide PA tread made of thermoplastic polyurethane TPU 2 fixed castors + 2 swivel castors, roller bearings, wheel diameter - 125 mm			
2-sided variant:		length	width	height
	external dimensions:	682 mm	815 mm	1585 mm
	internal dimensions:	620 mm	815 mm	1320 mm
load capacity:	up to 500 kg			
walls:	side panels made of round steel tube, diameter 22 mm, infilled with 12x3 mm flat steel bars. three side rails made of steel flat bars, positioned (counting from the base) at intervals: 330 mm, 340 mm, 230 mm. height from the uppermost rail to the upper edge of the side wall - 410 mm. interior offers a large space for EURO size containers.			
surface finish:	zinc electro-plated Cr3 (blue)			
temperature resistance:	-40°C to +80°C			

Product description:

Our roll container type FP 682 1350 consists of a floor plate fitted with 2 fixed castors and 2 swivel castors.
Base made of recyclable HDPE plastic, additionally reinforced with two steel flat bars underneath.
Castor rims made of polyamide PA, tread made of TPU thermoplastic polyurethane, wheels' diameter 125 mm, mounted on roller bearings.
This design makes transporting goods easy, as it ensures smooth rolling on smooth floors.
Furthermore, the castors can withstand temperatures from -40°C to +80°C.
All metal parts of the container are zinc electro-plated Cr3 (blue)
Three side rails made of steel flat bars, positioned (counting from the base) at intervals of: 330 mm, 340 mm, 230 mm.
Height from uppermost rail to upper edge of side wall - 410 mm.
Other colours of the base (RAL) available on request.
Large selection of additional accessories (shelves, transport handles, covers, load securing straps, etc.).

IDEAL FOR
EURO-STANDARD BOXES



boxes available as
additional equipment



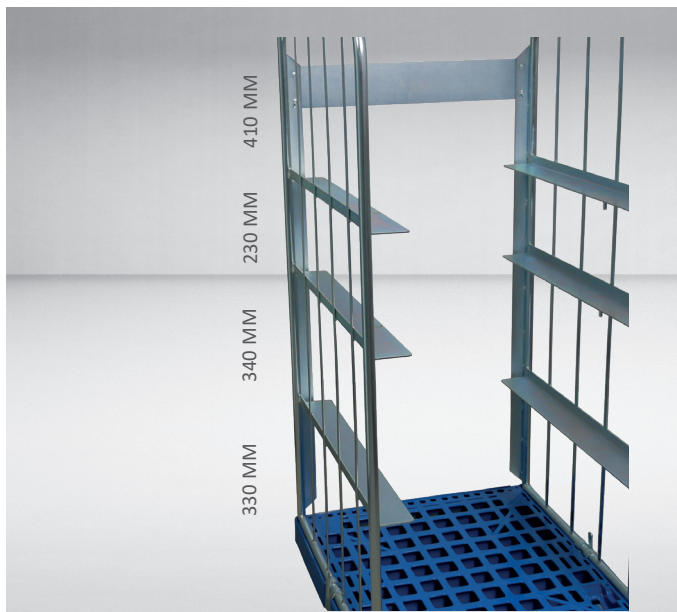
additional stabilisation in the form of
side-wall connectors



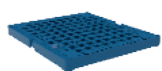
2-sided variant



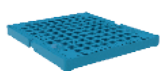
zinc electro-plated Cr3 (blue)
wide selection



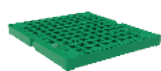
wide selection of colors (RAL palette) to be chosen from



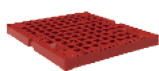
5010
niebieski Chagall



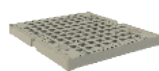
5012
niebieski lekki



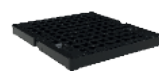
6024
„traffic green”



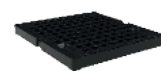
3000
czerwony ognisty



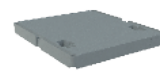
7032
szary beżowy



9005
czarny głęboki



9005+R
czarny głęboki



7046
szary ciemniejszy



wide selection of castor sets



wide selection of straps



handles can be installed

