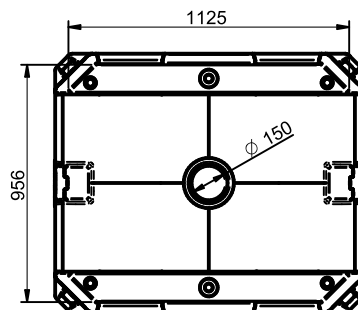
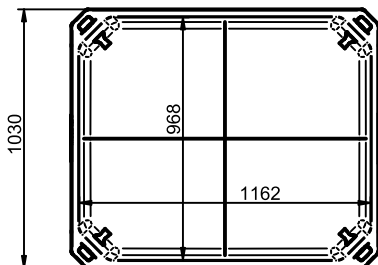
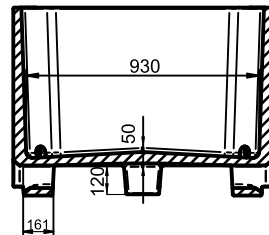
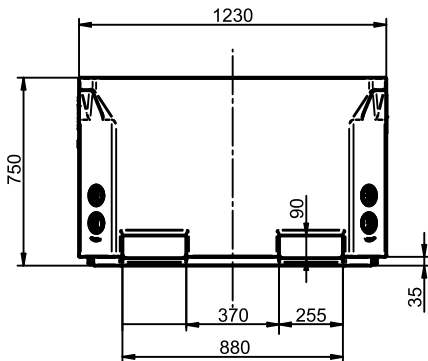
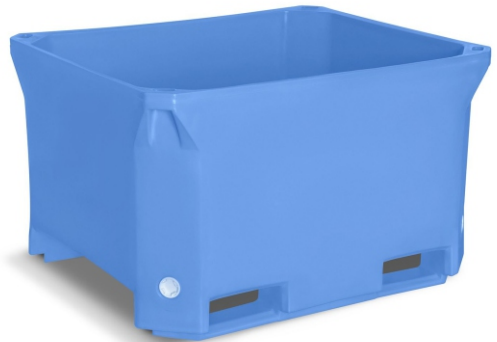


## Technical Data Sheet

[info@fach-pak.com](mailto:info@fach-pak.com)  
[www.fach-pak.com](http://www.fach-pak.com)

### Type 660

Dimensions: 1230 x 1030 x 750 mm  
 Capacity: 620 L  
 Skin material: MDPE  
 Insulation core: expanded PE or closed cell PU  
 Wall thickness: 32 mm  
 Weight: 60 kgs (EPE) / 51 kgs (PU)  
 Drain holes: 0 - 1 - 2 - 3 - 4 / 2" BCS 56 x 4  
 Option: bottom protrusions, drain hole 2" BSP  
 Stackable with: type 660



Dimensional tolerance  $\pm 3\%$ , any changes and errors reserved.

All technical data provided are guide values. They may vary because of specific applications and conditions. The information provided are based on the current knowledge and experience. The user is obliged to carry out its own tests and inspections before regular usage of the product.