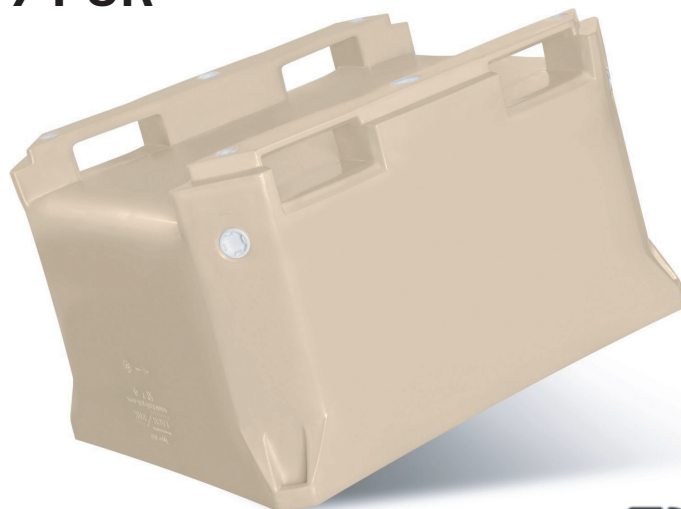


## TYPE 660-7 PUR



## PRODUCT SPECIFICATION



### PRODUCT ID

FP-660-7 PUR

### MATERIAL

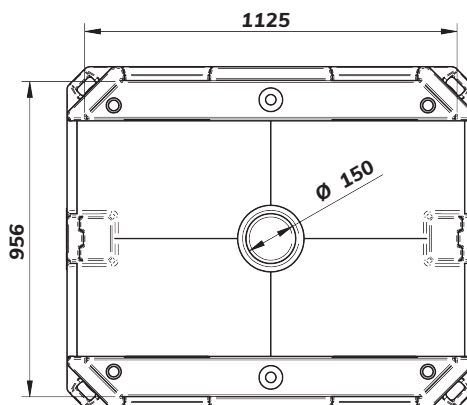
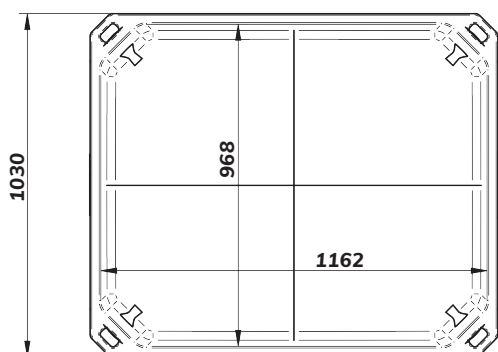
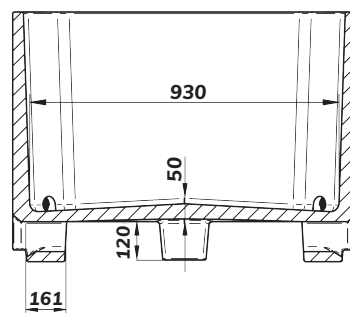
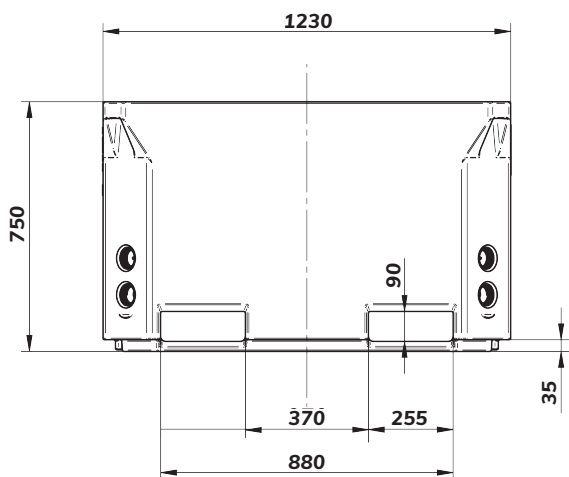
virgin PE-1A

### INSULATION

polyurethane foam (PUR)

### DIMENSIONS

	Exterior	Interior maximum	Interior minimum
LENGTH	1230 mm	1170 mm	1141 mm
WIDTH	1030 mm	970 mm	946 mm
HEIGHT	750 mm	580 mm	566 mm



CAPACITY	620 L
WALL THICKNESS	32 mm
WEIGHT	51 kg
DRAIN HOLES	0 - 1 - 2 - 3 - 4 / 2" BCS 56 x 4
STACKABLE WITH	type 460 / 650 / 660

**DEDICATED LID** (additional equipment)

top



bottom



variant no. 1

bottom



variant no. 2

**CHARACTERISTIC**

- smooth, solid and hygienic walls and bottom
- 2 runners
- up to 4 drainage holes with stoppers
- gravity floor and drips for easier drainage
- suitable for contact with perishable products
- strong and robust corners allowing safe operating with crane's lifting hooks
- stackable with or without lid
- rounded design for easy washing and cleaning
- pallet truck access from all 4 sides
- available in beige and blue colour, other colours upon request
- long lasting UV-protection

**IMPORTANT**

- dimensional tolerance  $\pm 3\%$ , any changes and errors reserved.
- all technical data provided are guide values - they may vary because of specific applications and conditions, the information provided are based on the current knowledge and experience.
- the user is obliged to carry out its own tests and inspections before regular usage of the product.